



# VANTAGE™

GAS & GAS/OIL (DUAL-FUEL)  
CONDENSING BOILERS

2.0 – 6.0 MILLION BTU/HR



# HEAVY-DUTY ENGINEERING

Fulton's Vantage condensing boiler combines proven industrial-grade firetube construction with modern condensing boiler efficiency. Featuring a High-Mass and High-Volume pressure vessel, the Vantage provides exceptional tolerance for varying and sometimes unpredictable system conditions.

## DURABLE & DEPENDABLE

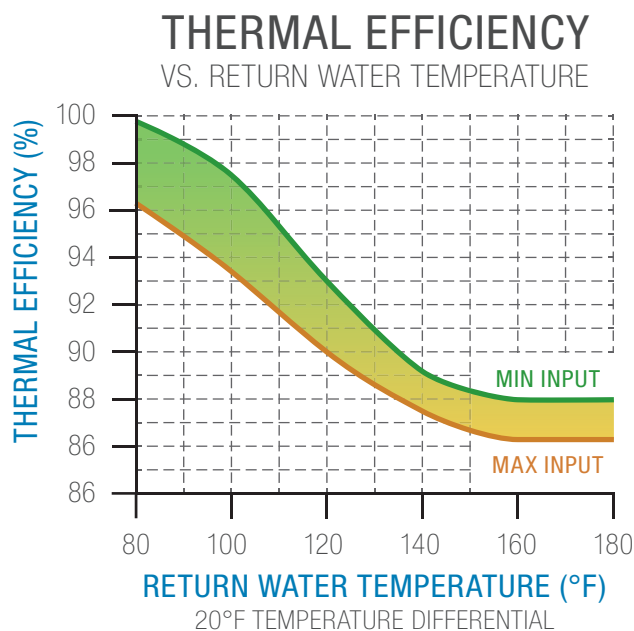
### DESIGNED FOR VARIABLE PRIMARY FLOW

This simplified piping method enhances temperature control, reduces design complexity, and maximizes efficiencies by delivering the lowest temperature water directly to the boiler with no blending.

### DUAL-FUEL OPERATION WITH #2 OIL

For critical heating processes requiring redundancy in the event of a fuel disruption, Vantage boilers can be configured for dual-fuel operation.

### LIFETIME THERMAL SHOCK WARRANTY



▲ A healthcare facility in Wisconsin utilizes three Vantage 3.0 MM BTU/hr boilers for multiple heating applications

## MODULAR BOILER SEQUENCING

The optional touchscreen ModSync integrates multiple Vantage boilers into a cohesive system. This provides centralized intuitive monitoring of the entire boiler plant.

### BEST EFFICIENCY PERFORMANCE

Highly optimized control matches boiler output to system load, thereby minimizing boiler cycling and extending equipment life.

### BUILDING INTEGRATION

Modbus; BACnet configurable

### CUSTOMIZED PROGRAMS AVAILABLE

Control sequences can be tailored to the unique needs of your application.

## SIGNIFICANT ENERGY SAVINGS

### PRECISION COMBUSTION SYSTEM

Vantage boilers feature linkageless air and gas servo motors

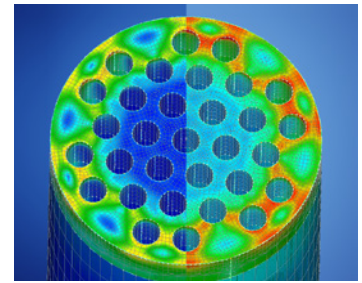
### CONSISTENT EFFICIENCY

Reliable performance throughout varying environmental conditions and heating demands.

### LOW EMISSIONS CONFIGURABLE

# OPTIMIZED ARCHITECTURE

- ▶ **INDUSTRIAL DURABILITY:** The fully wetted furnace chamber and large passageways keep stresses low and allow for full input without flame impingement on gas or #2 fuel oil.
- ▶ **ADVANCED MATERIALS:** The **Duplex Alloy Stainless Steel heat exchanger** features superior strength, lower stresses, and improved corrosion resistance over conventional 316L and 439 grades used by competitors.
- ▶ **ROBUST PRESSURE VESSEL:** Precision robotics and ASME-certified welders perform the impressive workmanship that goes into the Vantage pressure vessel. It's engineered for unsurpassed durability in high demand commercial and industrial applications; **a zero-flow condition will not harm the boiler.**



**Finite Element Analysis (FEA)**  
*Duplex Stainless Steel (left) features 19% greater strength and a 23% reduction in thermal expansion compared to 316L (right)*





# DUAL-FUEL PEACE OF MIND

## FUEL VARIETY AND FLEXIBILITY

Vantage boilers include packaged power burners that can be configured for a wide variety of fuels.

- ▼ NATURAL GAS and #2 FUEL OIL
- ▼ PROPANE and #2 FUEL OIL
- ▼ NATURAL GAS and PROPANE
- ▼ B-100 BIODIESEL OPTIONS AVAILABLE

## SIMPLIFIED OPERATION

With automatic fuel switchover capabilities, changing fuels is as easy as flipping a switch.

- ▼ FULL BTU/HR INPUT ON BOTH FUELS
- ▼ DIRECT SPARK OIL IGNITION
- ▼ NO GAS PILOT REQUIRED ON OIL
- ▼ DOES NOT REQUIRE COMPRESSED AIR

## FULL-TIME FUEL OIL BOILER

### ▼ ULTRA-HIGH EFFICIENCY

Condensing operation on gas and <15 ppm sulfur #2 oil; non-condensing on standard #2 oil.

### ▼ FUEL CURTAILMENT APPLICATIONS

Customers may qualify for lower natural gas rates with the ability to operate on a second fuel.

### PROPANE

*Tanks must be installed outdoors with minimum clearance requirements to surrounding buildings.*

### #2 FUEL OIL

*Can be stored indoors; already available in many buildings from prior installations or in facilities with backup generators.*

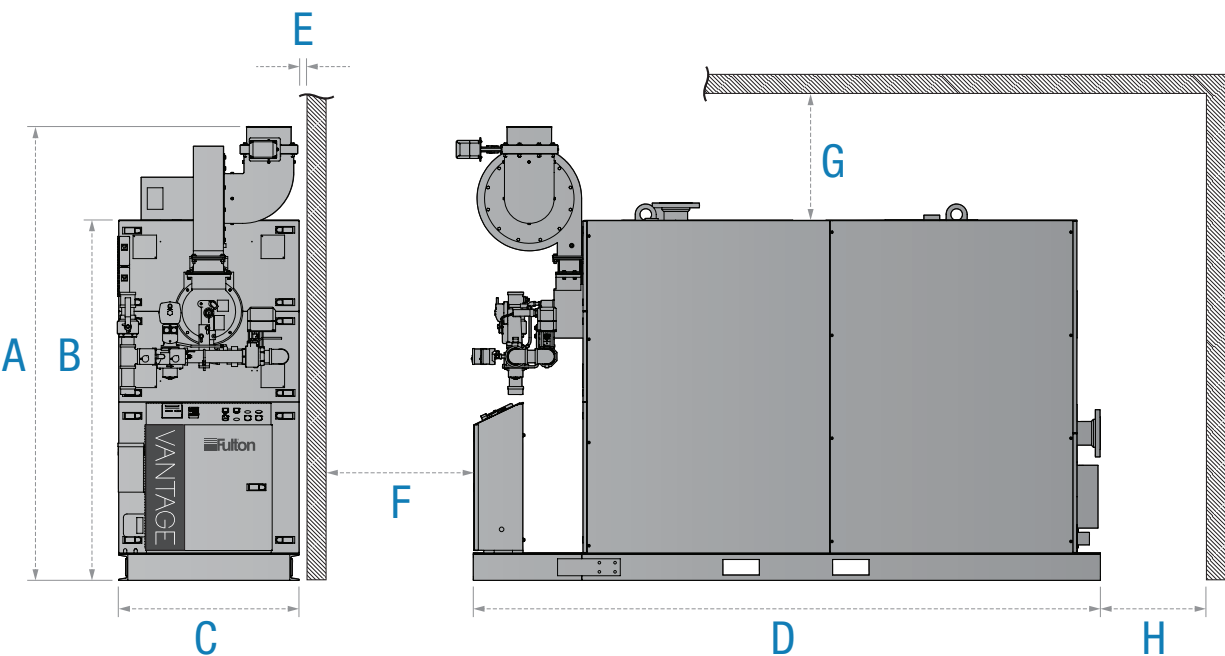
▼ *An Indiana Hospital relies on three Vantage (VTG-2000DF) dual-fuel boilers to provide uninterrupted service*



# SPECIFICATIONS AT A GLANCE

MODEL:		VTG	2000	2000DF	3000	3000DF	4000	4000DF	5000	5000DF	6000	6000DF
SPECIFICATIONS												
Max. Input	MBH	2000	2000	3000	3000	4000	4000	5000	5000	6000	6000	6000
Therm. Eff. (BTS-2000)	%	95.7	95.7	96.3	96.3	96.9	96.9	92.6	92.6	94.0	94.0	94.0
Dry Weight	LB	3,800	3,800	5,300	5,300	6,600	6,600	6,900	6,900	10,800	10,800	10,800
Operating Weight	LB	5,100	5,100	7,100	7,100	8,900	8,900	9,200	9,200	14,800	14,800	14,800
Water Content	GAL	147	147	215	215	275	275	275	275	480	480	480
Electrical Req. at 460/3/60	FLA	5	7	7	8	10	8	13	15	13	15	15
Electrical Req. at 230/3/60	FLA	10	14	14	16	19	16	26	30	26	30	30
Electrical Req. at 208/3/60	FLA	13	16	16	19	22	19	29	34	29	34	34
DIMENSIONS												
(A) Height	IN	76.2	64.2	86.9	86.9	89.2	77.9	99.2	77.9	88.9	88.9	88.9
(B) Height w/o Blower	IN	64.2	64.2	72.3	72.3	77.9	77.9	77.9	77.9	88.9	88.9	88.9
(C) Width	IN	30.5	30.5	34.5	34.5	40.5	40.5	40.5	40.5	50.5	50.5	50.5
(D) Depth	IN	108	122	120	132	124	136	136	142	155	155	155
MINIMUM CLEARANCES												
(E) Sides	IN	1	1	1	1	1	1	8	1	1	1	1
(F) Front	IN	36	36	36	36	36	36	36	36	36	36	36
(G) Top	IN	24	24	24	24	24	24	24	24	24	24	24
(H) Rear	IN	24	24	24	24	24	24	24	24	24	24	24

NOTE: Specifications and dimensions are approximate and for reference purposes only. Fulton reserves the right to change specifications and/or dimensions without notice. Graphics contained in this brochure may not be representative of actual product.



# SIMPLIFY YOUR HEATING SYSTEM

Vantage boilers are available through a worldwide network of authorized Fulton representatives. Your local representative can assist you in the selection of Fulton equipment to best meet your application needs.



Find your local sales  
representative online at:

[www.fulton.com/sales](http://www.fulton.com/sales)



/FULTON-COMPANIES



/FULTONBOILER



@FULTONBOILER



Fulton Heating Solutions, Inc.  
6288 Running Ridge Road  
Syracuse, NY 13212  
(315) 298-5121



Printed in the U.S.A  
VANTAGE\_BRO\_2017-0109

Learn more about  
Fulton products and  
services online at:  
[www.fulton.com](http://www.fulton.com)